



HADI DEVELOPERS



4 KANAL

DOUBLE BASEMENT
(FOR PARKING ONLY)

LOWER GROUND

GROUND + 8

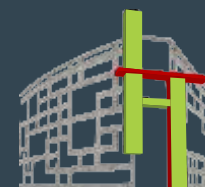
88 SHOPS

118 APARTMENTS

PENT HOUSES

3 YEARS
(EASY INSTALLMENT PLAN)

We Build Your Dreams

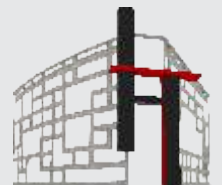


HADI TOWER
TOP CITY - I HUB COMMERCIAL, ISLAMABAD



Islamabad the Beautiful

Islamabad, the capital city is undoubtedly the heart and soul of Pakistan. With its well planned architecture that enables convenient access to schools, shopping malls, hospitals and scenic natural beauty; it is truly one of the most peaceful city in the world.



HADI TOWER



CEO MESSAGE

HADI Gardens & Real Estate Developers Private Limited is one of the prominent entities in the Real Estate Industry. The business philosophy of the company derives its core strength from a firm belief that lays stress on state-of-the-art engineering techniques, use of superior quality material, innovation, maximization of resources and elegant aesthetics are the standards we ensure throughout our construction projects. This results in innovative and specific to contemporary standards for both residential and commercial projects.

HADI Garden & Real Estate Builders works with leading consulting architecture firms to introduce new design and construction concepts in Pakistan. As we march towards modernity and global architectural practices, we try to infuse certain grandeur in our projects which cannot be captured in words.

We at HADI's are constantly striving to scale new heights in professional competencies and efficiencies. You may experience this facet in wide range of activities which create value for our customers and business partners. Using our intellectual and managerial prowess and harnessing the benefits of state-of-the-art technology, HADI Gardens is all set to venture into the next level of Real Estate Development and Construction in the country.

To our customers; You have many choices for Real Estate investment in Pakistan, however, you honor us with your business which is our greatest accomplishment. We will do everything to keep our promise to you. Insha Allah

Qasir Abbas
CEO

OUR VISION

To become the leading Real Estate Company providing world class Real Estate Services that meet our clients' needs at all times.

OUR MISSION

To give our clients a specialized Real Estate experience, providing state-of-the-art professional services to create maximum benefit and personal satisfaction in a lifetime relationship.

CORE VALUES

- Committed to excellence
- Timely Delivery
- Trust & Reliability
- Quality Assurance
- Innovation
- Team Work







PROJECT DESCRIPTION

Hadi Tower a project of Hadi Gardens has been built on a vision to bring a modern living space for our customers who prefer affordable yet luxurious hospitality. Designed keeping in mind the residential as well as commercial aspects of a modern society; Hadi Tower will be your preferred investment choice.

Quality & Innovation are the guiding principles for our team; built in the landscape of Margalla hills. Hadi Tower comprises of eight floor. Double basement for parking, lower ground & ground floor have been dedicated for commercial shops; while first floor layout is for corporate offices. 2nd to 8th floor has been dedicated for residential purposes.

COMPANY PROFILE

HADI Gardens & Real Estate Developers Private Limited has emerged as one of the most progressive, multi-faceted Real Estate and Construction Company. Through the years, HADI Gardens have stayed true to the commitment “We Build your Dreams” by creating architectural marvels using state-of-the-art technology, global architectural, construction and business practices. We are passionate about providing cost effective solutions for our customers while creating and adding value for our partners and stakeholders.

PROJECTS OF HADI GARDENS

- Hadi Arcade - Bahria Town, Rawalpindi
- Hadi Arcade -I - Bahria Town, Rawalpindi
- Allama Iqbal Town, Mandi Bahauddin
- Hadi Arcade-III at Muree (Adjacent to Gloria Jean's on Expressway)
- Casablanca Apartments at Muree

UPCOMING PROJECTS:

- Hadi Gardens at Adiala Road, Rawalpindi
- Kashmir Highway, Islamabad
- Mega Project in Phase - 8, Bahria Town
- GT Road, Rawalpindi





HADI TOWER



SALIENT FEATURES

Lights and Ventilation

Hadi Gardens projects are a product of persistent research and development, in understanding the usual problems faced in apartment buildings hence eliminating its causes. Hadi Tower is designed to provide ample sunlight and air circulation.

Smart Living

- Digital Identification Network
- Smart Electrical and Gas Meters
- Resident Portal

Security

- Smart Security
- Round the Clock Security
- CCTV Support

Maintenance and Support

- 24-Hour Maintenance
- Regular and Timely Routine Service and Maintenance

Parking

- Double Basement for Parking
- Designated Parking for Guests
- Extra Storage Space in Parking

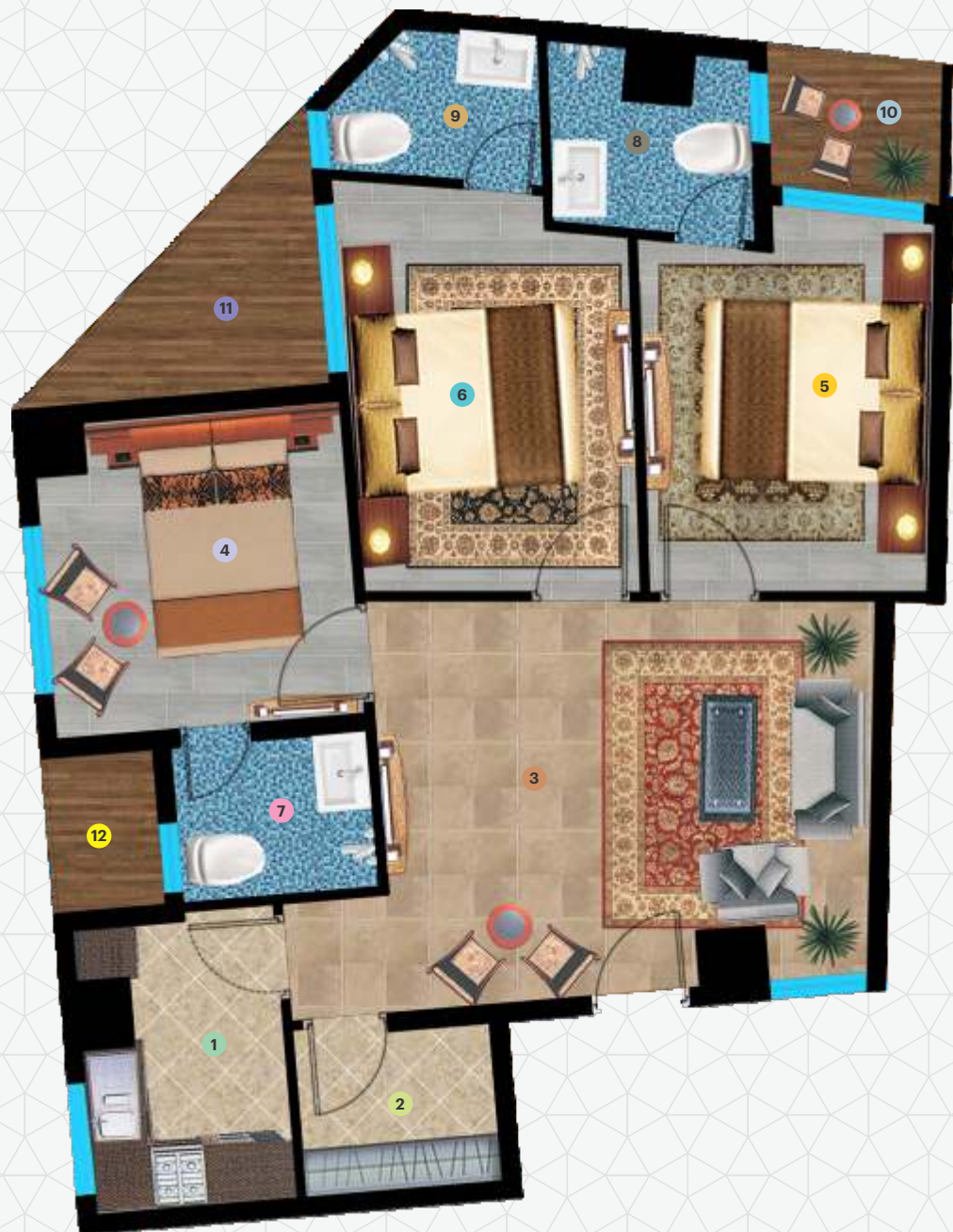




3 - BED APARTMENTS

AREA = 1490 sq.ft

- | | | |
|----|--------------|---------------|
| 1 | KITCHEN | 7'-10"x10'-9" |
| 2 | STORE | 7'-10"x6'-3" |
| 3 | LOUNGE | 17'-9"x15'-0" |
| 4 | BEDROOM - 1 | 11'-3"x11'-6" |
| 5 | BEDROOM - 2 | 10'-8"x12'-5" |
| 6 | BEDROOM - 3 | 11'-2"x15'-0" |
| 7 | BATHROOM - 1 | 7'-4"x6'-4" |
| 8 | BATHROOM - 2 | 8'-0"x6'-6" |
| 9 | BATHROOM - 3 | 5'-6"x5'-0" |
| 10 | TERRACE - 1 | 6'-0"x5'-0" |
| 11 | TERRACE - 2 | 6'-9"x6'-6" |
| 12 | TERRACE - 3 | 6'-0"x5'-6" |



3 - BED APARTMENTS

AREA = 1268 sq.ft

- | | | |
|----|--------------|----------------|
| 1 | KITCHEN | 7'-4.5"x11'-5" |
| 2 | STORE | 6'-4"x8'-3" |
| 3 | LOUNGE | 14'-8"x11'-5" |
| 4 | BEDROOM - 1 | 12'-0"x11'-6" |
| 5 | BEDROOM - 2 | 12'-0"x11'-6" |
| 6 | BEDROOM - 3 | 12'-8"x11'-8" |
| 7 | BATHROOM - 1 | 6'-10"x5'-3" |
| 8 | BATHROOM - 2 | 8'-2"x5'-0" |
| 9 | BATHROOM - 3 | 6'-9"x5'-0" |
| 10 | TERRACE - 1 | 8'-4"x4'-8" |



2 - BED APARTMENTS

AREA = 1155 sq.ft

- 1 KITCHEN 10'-11"x13'-0"
- 2 LOUNGE 17'-6"x12'-9"
- 3 BEDROOM - 1 11'-8"x13'-3"
- 4 BEDROOM - 2 16'-3"x11'-9"
- 5 BATHROOM - 1 6'-6"x5'-3"
- 6 BATHROOM - 2 8'-3"x6'-9"
- 7 TERRACE - 1 5'-9"x4'-9"
- 8 TERRACE - 2 7'-0"x4'-0"



2 - BED APARTMENTS

AREA = 1010 sq.ft

- 1 KITCHEN 14'-2"x7'-11"
- 2 LOUNGE 14'-2"x15'-11"
- 3 BEDROOM - 1 12'-4"x11'-9"
- 4 BEDROOM - 2 12'-4"x12'-0"
- 5 BATHROOM - 1 5'-8"x7'-6"
- 6 BATHROOM - 2 5'-8"x8'-5"
- 7 TERRACE - 1 4'-0"x7'-10"

*NOTE: Area 2 bed ranges from 880 sq.ft - 1155 sq.ft

1 - BED APARTMENTS

AREA = 695 sq.ft

- 1 KITCHEN 8'-0"x8'-10"
- 2 LOUNGE 12'-9"x13'-3"
- 3 BEDROOM 12'-9.5"x14'-11"
- 4 BATHROOM 5'-10"x8'-0"
- 5 TERRACE - 1 6'-3.5"x5'-0"



1 - BED APARTMENTS

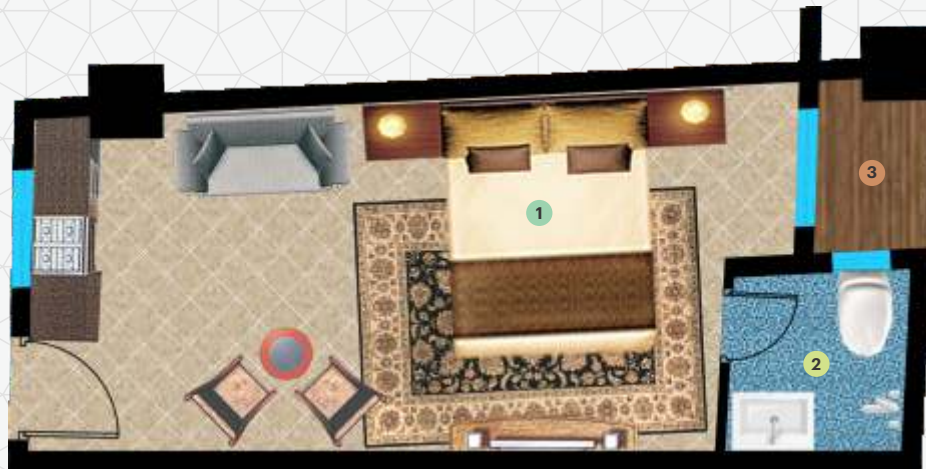
AREA = 520 sq.ft

- 1 LOUNGE 12'-3"x13'-0"
- 2 BEDROOM 10'-10"x13'-0"
- 3 BATHROOM 5'-6"x6'-8"
- 4 TERRACE - 1 4'-0"x5'-8"

STUDIO APARTMENTS

AREA = 537 sq.ft

- 1 STUDIO 23'-8"x12'-3"
- 2 BATH 8'-4"x6'-7"
- 3 TERRACE 5'-4"x5'-8"



STUDIO APARTMENTS

AREA = 540 sq.ft

- 1 STUDIO 12'-5"x24'-4"
- 2 BATH 6'-11"x6'-10"
- 3 TERRACE 6'-6"x4'-6"

*NOTE: Area Studio apartments ranges from 405 sq.ft - 540 sq.ft



Motorway

3 km (2 min)

Islamabad International Airport

5 km (4 min)

Centaures

22 km (25 min)

Faisal Masjid

25 km (28 min)

Zero Point

23 km (24 min)

Rawal Dam

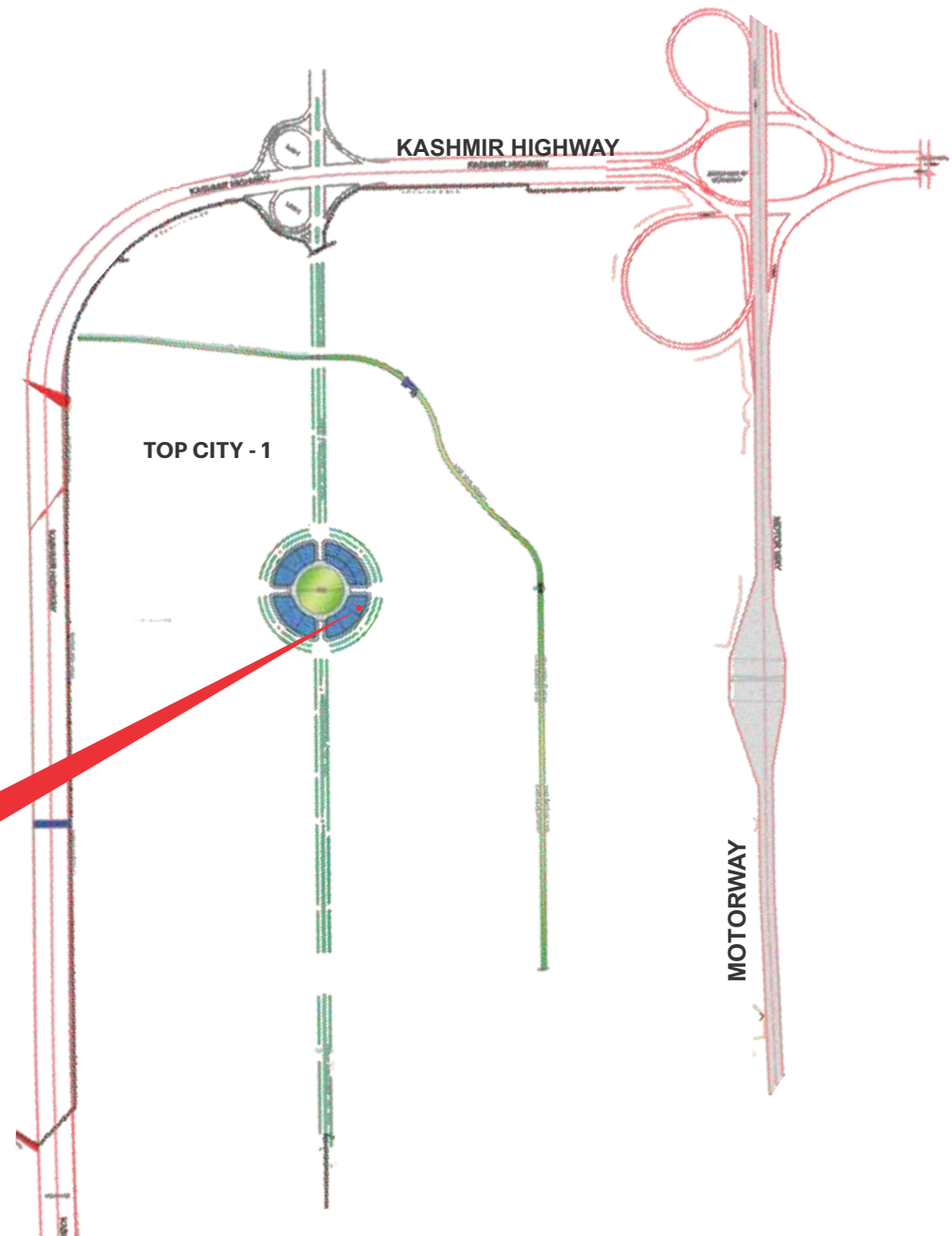
30 km (38 min)

Bahria Town Phase - 8

42 km (65 min)

Murree

74 km (105 min)



PROJECT FEATURES

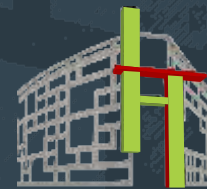
- Exceptional Finish, Fixture and Fittings
- Dedicated Entrance
- High Speed Elevator
- Secure Car Parking
- Earthquake Resilient Building Design
- Round the clock 24/7 Security
- Spaciously Designed Corridors and Lobby
- Garbage Collection and Disposal
- Fire Extinguishers in all Corridors
- On Site Maintenance Services
- State-of-the-art Bathroom & Kitchens
- High Quality Electrical and Mechanical Fittings and Accessories
- Glazed Aluminum Windows
- Regular Water Supply







HADI DEVELOPERS



HADI TOWER

Plot No. 164, Hadi Arcade - I, Ground Floor, Near New Head Office,
Bahria Town, Phase - 8, Rawalpindi

☎ 0330-3493490 - 0330-3493492

📞 0330-3493491

✉ Info@hadigardens.com

🌐 www.hadigardens.com - www.hadigardens.com.pk